



HOFFMEIER
INDUSTRIEANLAGEN GMBH + CO. KG





HOFFMEIER

INDUSTRIEANLAGEN GMBH + CO. KG

PLANNING · **MANUFACTURING** · **ERECTION**





WE DO EVERYTHING FOR A FEW



HOFFMEIER is a company with international operations which focuses on steel and mechanical engineering, filter technology, services and conveying equipment. Where services are concerned, **HOFFMEIER** can look back on more than 30 years of wide-ranging expertise in planning, manufacturing, erection, commissioning, inspection and maintenance work.

The company has grown continuously since it was founded by Werner Hoffmeier in 1970, along with the ever more demanding tasks set by our customers, until the workforce today numbers over 800 employees. The works now cover an area larger than 80,000 m².

Our mutual co-operation with clients, for the benefit of the end result, is the highest priority for the Westphalia-based company.

HOFFMEIER constantly looks to find new ways to deploy technical innovations and to increase efficiency. The company's high level of performance is due not least to the specialist expertise and the full involvement of every member of its staff.

Each customer has their own contact person, thereby ensuring more comprehensive advice and assistance during projects. The fast and flexible deployment of our specialist personnel and the functionality of the high-performance machinery guarantee complete satisfaction amongst customers. We primarily offer our



HOFFMEIER

INDUSTRIEANLAGEN GMBH + CO. KG



services to the following sectors:

- Cement, limestone, gypsum works
- Stone and earth-moving industry
- Power stations, nuclear power stations
- Wood materials industry
- Furnace works
- Foundries
- Chemical industry
- Sugar industry
- Waste incineration plants
- and others

Such a wide-ranging customer potential requires the highest quality and a skilled workforce.

HOFFMEIER has staff specially trained for each task who are able to fulfil the constantly rising demands for the highest availability and reliability, whilst making use of the latest technologies. The development phase of each order is furthermore accompanied by computer-supported planning. The stored data for static calculations, progress, network plans, time schedules, logistics and spare parts management can be accessed directly at all times.

The stock of machines is equipped to the latest state of technology for both cutting and non-cutting work, and this enables industrial plants, machinery and complex steel structures to be manufactured under optimum economic conditions.

If, however, a customer has already prepared plans and designs, HOFFMEIER is naturally a reliable partner for the production and assembly work.

The high standard of output is monitored by specific work instructions, specifications, the quality system and by deploying the latest testing and measuring equipment.

HOFFMEIER is a reliable partner round the clock in all phases of the teamwork involved in PLANNING – MANUFACTURING – ERECTION, supplies of spare parts and all other services.

As far as the quality of performance is concerned, HOFFMEIER rejects all compromises right from the start. And it will remain so in future.

MULTIPLICITY IN PERFECTION



◀ **Environmental engineering**
Building large pipelines



▶ **Design department**
CAD-supported planning



▶ **Erection and industrial plant services**
Erection of new plants



▶ **Erection and industrial plant services**
Erection of new plants

▼ **Steel engineering**
Planning, manufacturing and erection of every kind of steel structure



▶ **Erection and industrial plant services**
Maintenance, repairs



▶ **Manufacturing**
NC-Autogen flame-cutting systems
max. cutting width: 4.000
max. cutting length: 20.000
max. cutting thickness: 200
Figures in mm
Number of flame-cutters: 6



▶ **Erection and industrial plant services**
Optimisation, repair of kiln shells

▶ **Erection and industrial plant services**
Erection of new plants



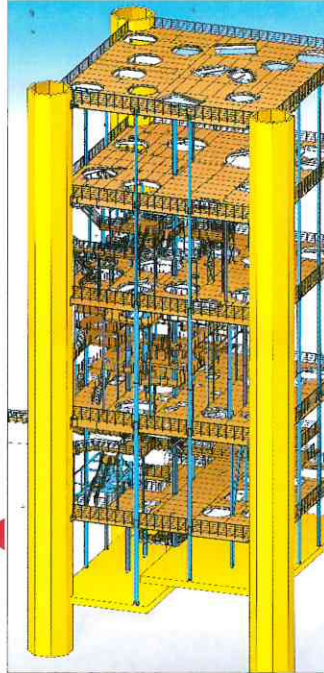
HOFFMEIER

INDUSTRIEANLAGEN GMBH + CO. KG

▶ **Erection and industrial plant services**
Maintenance, repairs



▼ **Plant construction**
Pre-heater column
Approx. 2,100 t steel
Approx. 82 m high



▶ **Environmental engineering**
Electric filter during erection

▼ **Planning**
CAD drawing
Pre-heater column



▶ **Mechanical engineering**
Planning, manufacturing
and installing special
machines



▶ **Manufacturing**
Hydr. folding press
Press capacity: 5.000 KN
Edge length: 4.500 mm

▶ **Environmental engineering**
Maintenance of electric
filters



▶ **Erection and industrial plant services**
Building pipeline systems

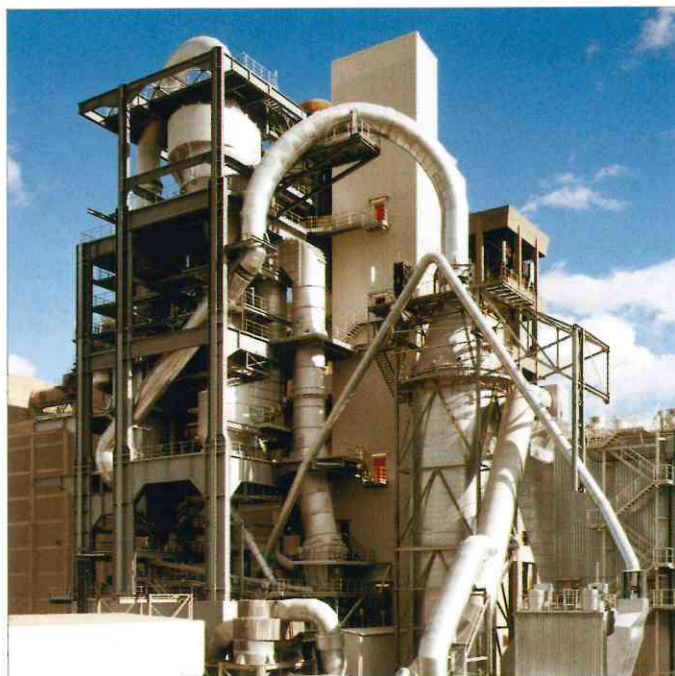


▶ **Environmental engineering**
Hose filter housing during
erection

▶ **Erection and industrial plant services**
Inspecting power stations



SERVICE PROVIDER TO INDUSTRY



ROUND-THE-CLOCK SERVICE



The service department at HOFFMEIER is on an equal footing in the corporate philosophy as planning, manufacturing and erection work. Service technicians perform maintenance and repairs round-the-clock. These specialists are regularly trained and have excellent assembly equipment. A complete construction site service is available which takes care of every last detail for customers.



PLANNING · MANUFACTURING · ERECTION



A summary of our range of services

Erection and industrial plant services

- Erection of new plants
- Dismantling old plants
- Third-party assemblies - conversions
- Erection of pressing plants
- Optimisation
- Maintenance
- Inspections
- Repairs



Manufacturing to in-house or outside designs

Plant construction

Steel engineering

- Structural steel engineering to demanding specifications

Pipeline engineering

- Blow pipelines for dust and powdered goods
- Large pipelines primarily for non-pressurised media
- De-dusting systems
- Emission prevention systems

Equipment construction

- Silo plant engineering
- Emission prevention absorbers
- Bunker systems
- Supply and dosing vessels

Mechanical engineering

- Construction of special machines
- Supplies of spare parts

Environmental engineering

- De-dusting technology
- Emission prevention systems
- Asbestos rehabilitation

Conveyor and preparation technology

- Belt and worm conveyors
- Steel cell conveyors
- Bucket conveyors
- Chain conveyor systems
- Batch loading plants
- Dosing equipment

More than 800 qualified staff work for our wide range of industries throughout Germany:

Cement, limestone, gypsum works
Stone and earth-moving industry

Power stations, nuclear power stations

Wood materials industry

Furnace works

Foundries

Chemical industry

Sugar industry

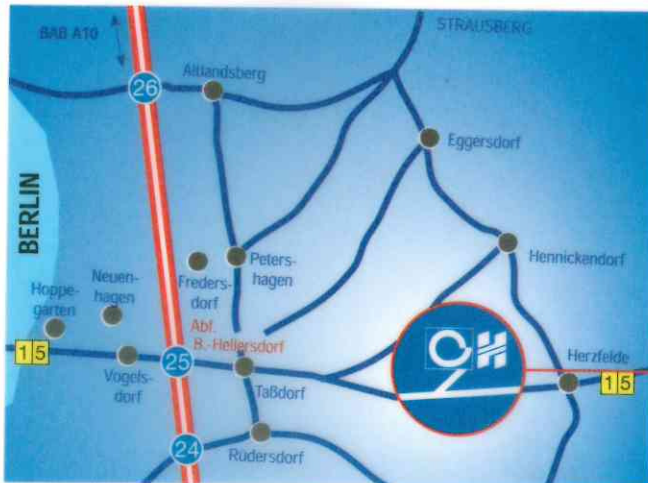
Waste incineration plants
and others

How to find us



HOFFMEIER
Industrieanlagen GmbH + Co. KG
 Kranstraße 45
 59071 Hamm-Uentrop - Germany
 Tel. +49 23 88/33-0
 Fax: +49 23 88/33-499

2 minutes from the Hamm-Uentrop exit



Berlin branch:
 In the RZG grounds,
 Frankfurter Chaussee (B1)
 15562 Rüdersdorf - Germany
 Tel. +49 3 36 38/7 61-0
 Fax: +49 3 36 38/7 61-10

