



## GRINDING OF TYRE SURFACES

### WE INCREASE THE PLANT AVAILABILITY BY REGULAR MAINTENANCE!

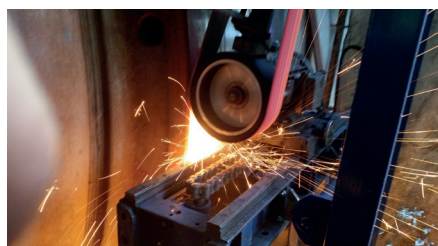
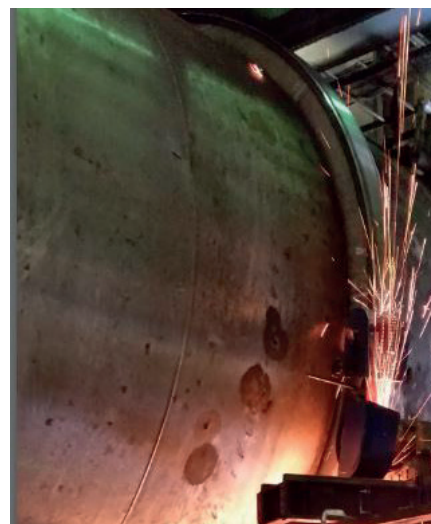
Tyres and rollers of rotary kilns and shell supported drums and mills are exposed to extreme mechanical stress, which can lead to damages and system shutdowns.

#### OUR RANGE OF SERVICES INCLUDES:

- Survey (inspection, measurement) of existing plants
- Comprehensive documentation and recommendation of measures to be taken
- Execution of grinding works with own grinding devices
- Alignment of tyres and rollers
- If necessary further measures like:
  - replacement of parts
  - Alignment of driving units
  - Adjustment of inlet and outlet seals

#### YOUR ADVANTAGES:

- Increase of the plant availability, prevention of downtimes
- Reduction of operational and investment costs by increasing the lifetime
- Long-term experience in the field of maintenance and optimization of installations of various suppliers
- 24/7 Service-Hotline – short reaction times in the event of repairs





## GRINDING OF TYRE SURFACES

### OUR SERVICEPRODUCTS:

#### LARGE COMPONENTS

Manufacturing and assembly of tube mills, rotary kilns and drums

#### CRANE RUNWAY

Engineering, manufacturing and installation of crane runways, crane girders and columns

#### GRINDING OF TYRE SURFACES

tube mills, rotary kilns and drums

#### ELECTROSTATIC PRECIPITATOR

Inspection and optimization of electrostatic precipitators

#### CRUSHING PLANTS

Inspection and maintenance of crushing plants

#### LIME PLANTS

Engineering, manufacturing and installation of plant components

#### WASTE INCINERATION PLANTS

Inspection and maintenance of waste incineration plants

#### HUMAN RESOURCES CONSULTING

Selection of specialists

#### REPAIR SERVICE

Quick repair of plant components

#### MACHINE DIAGNOSTICS

Measurement of vibrations, imbalances, bearing noise and alignment of machine parts

#### STEEL AND ROLLING MILL

Manufacturing, assembly, conversion and repair of plant components

### MORE THAN 50 YEARS OF EXPERIENCE

With more than 50 years of experience, we, as an international active company, are the right contact wherever maintenance, revision and modification works, assembly and disassembly works are to be performed in a professional manner.

#### CHALLENGE US! WE ARE ALWAYS AVAILABLE VIA OUR 24/7 SERVICE!

→ 24/7 HOTLINE +49 800 2388 33-0

→ [HOFFMEIER.DE](http://hoffmeier.de)

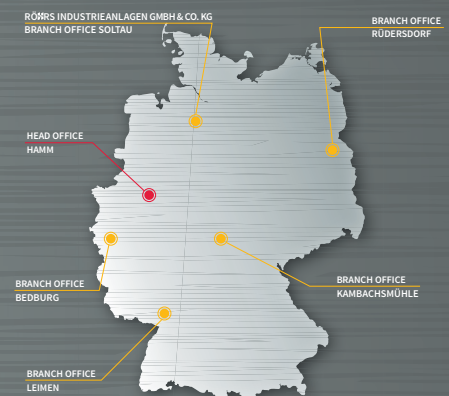
### OUR CONTACT

Hoffmeier Industrieanlagen  
GmbH + Co.KG  
Kranstraße 45  
D-59071 Hamm-Uentrop

Phone +49 2388 33-0  
Fax +49 2388 33-499

Mail [info@hoffmeier.de](mailto:info@hoffmeier.de)

### THROUGHOUT GERMANY



**HEAD OFFICE HAMM**  
Kranstraße 45  
D-59071 Hamm-Uentrop  
Phone +49 2388 33-0  
Fax +49 2388 33-499

**BRANCH OFFICE BEDBURG**  
Adolf-Silverberg-Str. 44  
D-50181 Bedburg  
Phone +49 2272 906 740-0  
Fax +49 2272 906 740-20

**BRANCH OFFICE SAB KAMBACHSMÜHLE**  
Kambachsmühle 1  
D-36460 Krayenberggemeinde  
Phone +49 36963 49-0  
Fax +49 36963 49-112

**BRANCH OFFICE LEIMEN**  
Unterm Sand 26  
D-69181 Leimen-St. Ilgen  
Phone +49 6224 55900-20  
Fax +49 6224 55900-21

**BRANCH OFFICE RÜDERSDORF**  
Frankfurter Chaussee (B1)  
D-15562 Rüdersdorf/Berlin  
Phone +49 33638 761-0  
Fax +49 33638 761-17

**RÜRS INDUSTRIEANLAGEN**  
GMBH & CO. KG BRANCH OFFICE SOLTAU  
Celler Str. 101-103 · D-29614 Soltau  
Phone +49 5191 9841-0  
Fax +49 5191 9841-41